



Department of Public Works  
**City Engineering Division**

608 266 4751

Larry D. Nelson, P.E.  
City Engineer

City-County Building, Room 115  
210 Martin Luther King, Jr. Boulevard  
Madison, Wisconsin 53703  
608 264 9275 FAX  
1 866 704 2315 Textnet

**Deputy City Engineer**  
Robert F. Phillips, P.E.

**Principal Engineers**  
Michael R. Dailey, P.E.  
Christina M. Bachmann, P.E.  
John S. Fahrney, P.E.  
Gregory T. Fries, P.E.

**Facilities & Sustainability**  
Jeanne E. Hoffman, Manager  
James C. Whitney, A.I.A.

**Operations Supervisor**  
Kathleen M. Cryan

**Hydrogeologist**  
Joseph L. DeMorett, P.G.

**GIS Manager**  
David A. Davis, R.L.S.

June 11, 2007

**Re: Public Informational Meeting  
Proposed Realignment of the Intersection at Lien Rd, N. Thompson Dr and Zeier Rd  
City Project No. 53B0790**

**To: Property owners adjacent to Lien Rd, N. Thompson Dr and Zeier Rd**

A public informational meeting will be held on **June 26, 2007 at 6:30pm** at the City of Madison Streets East Maintenance Building, 4602 Sycamore Avenue. The meeting is being held in order to inform the public, receive public input and address concerns raised at a previous public meeting regarding this project. Local businesses and the public are invited to attend and offer comments.

The proposed plan includes the realignment of Lien Road so that it flows straight through the intersection and aligning Zeier Road with North Thompson Drive so that they also flow straight through the intersection. This realignment of the intersection will provide additional capacity and safety for the intersection.


At the initial public meeting regarding this project City of Madison Traffic Engineering presented proposed design alternatives for the intersection, including a conventional signal controlled intersection and a roundabout. Several concerns were raised by the public including:

- The lack of gaps in traffic for vehicles trying to enter N Thompson Drive from side streets.
- The effect of the railroad crossings on both a roundabout and conventional intersection.

A presentation will be given by the City of Madison Traffic Engineering Division to explain the proposed design alternatives and the safety and access implications for pedestrians, bikes and vehicular traffic. Traffic Engineering will present the results of a gap study, which will illustrate how each design alternative will affect gaps in traffic on each leg of the intersection.

Representatives from City Engineering and Traffic Engineering will be available to discuss the project. Should you have any questions regarding the proposed project, please contact Glen Yoerger of my staff at 261-9177. Please feel free to share your thoughts and comments on the design alternatives and the project in general.

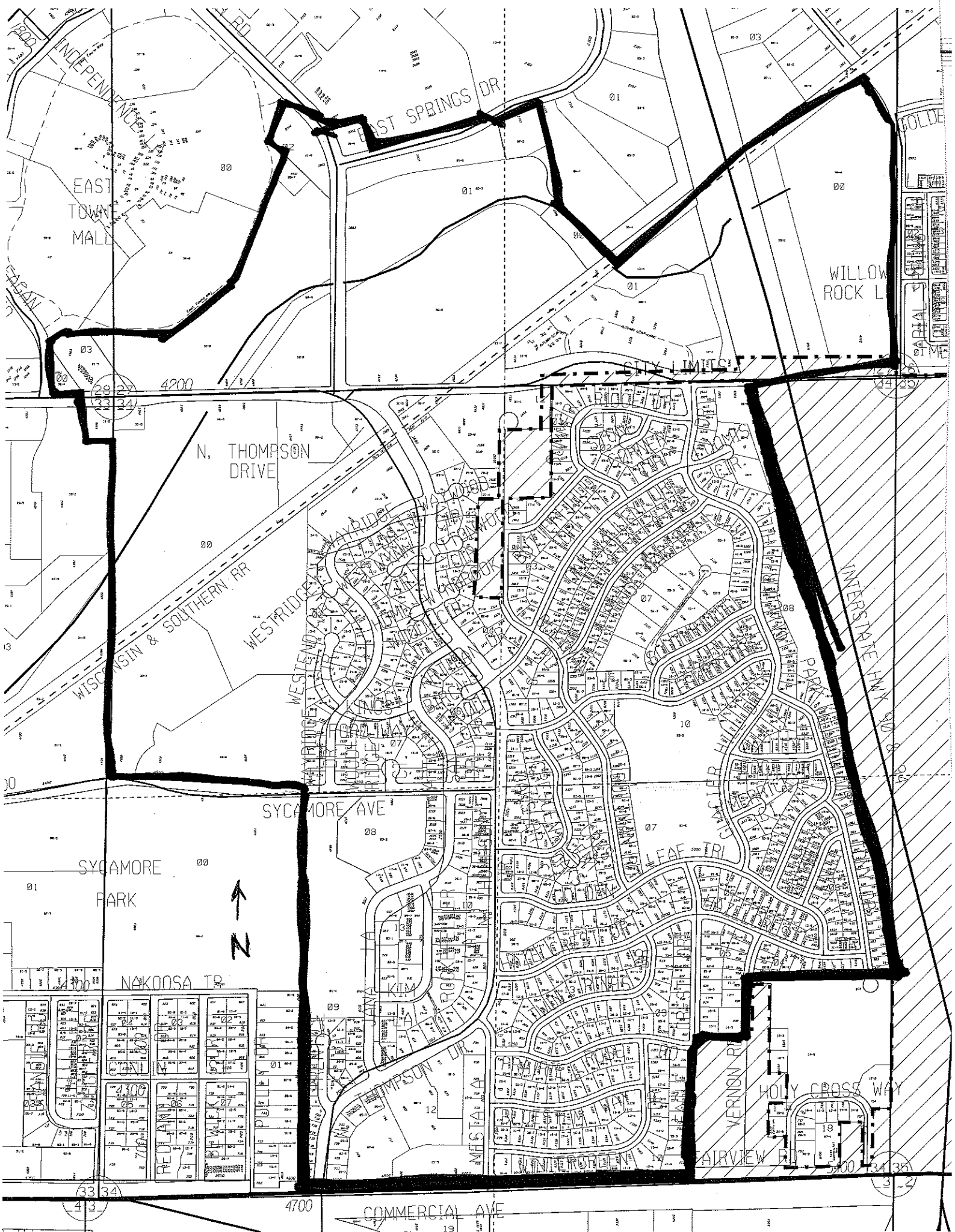
Sincerely,

  
for Larry D. Nelson, P.E.  
City Engineer

LDN:gey

cc: Ald. Joe Clausius  
Dan McCormick, Traffic Engineering  
Ped/Bike Motor Vehicle Commission

Christy Bachmann, City Engineering  
Board of Public Works  
Long Range Transportation Planning Commission



EAST TOWN MALL

EAST SPRINGS DR

WILLOW ROCK L

CITY LIMITS

N. THOMPSON DRIVE

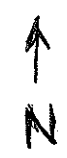
WISCONSIN & SOUTHERN RR

WESTRIDGE

WESTEND

SYCAMORE AVE

SYCAMORE PARK



NAKOOSA TR

KIM

ROCHELLE

LEAF TR

VERNON

HOLY CROSS WAY

COMMERCIAL AVE

33 34

4700

33 34